



Department of Transport  
Public Transport Authority

**Connecting**  
people and places

# RFT BRIEFING – PTA250023 DESIGN & CONSTRUCTION OF ELECTRIC PASSENGER VESSELS

14 April 2025





# Acknowledgement of Country

The Transport Portfolio acknowledges the traditional custodians throughout Western Australia and their continuing connection to the land, waters and community.

We pay our respects to all members of the Aboriginal communities and their cultures; and to Elders both past and present.

# Welcome

- On behalf of the PTA, welcome and thank you for coming to the tender briefing for design and construction of electric passenger vessels for the Transperth Ferry Service:
  - Lindsey White, Contract Manager, Transperth
  - Peter Jones, Executive Director, Transperth (Project Director)
  - Patrick Winter, Principal Project Manager (EV SME)
  - Lisa Tierney, PTA Procurement Development Manager
  - Bruce Donald, Probity Advisor





# RFT Briefing

- High level overview of the Tender requirements by PTA
- Provide technical and operational requirements
- Provide an opportunity for Tenderers to ask any questions regarding the project

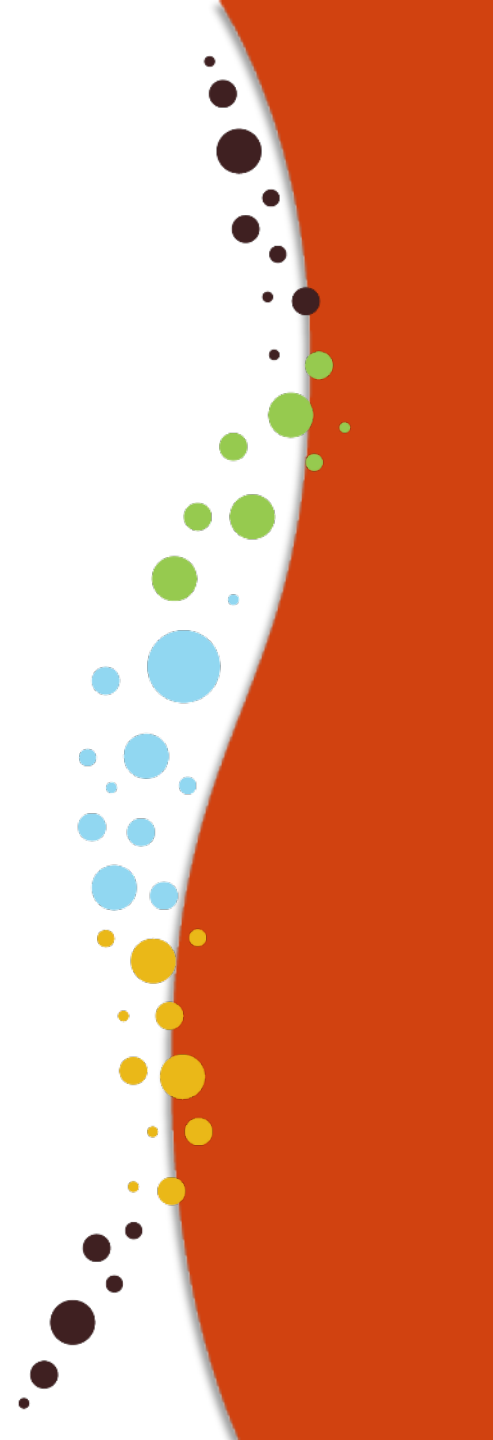
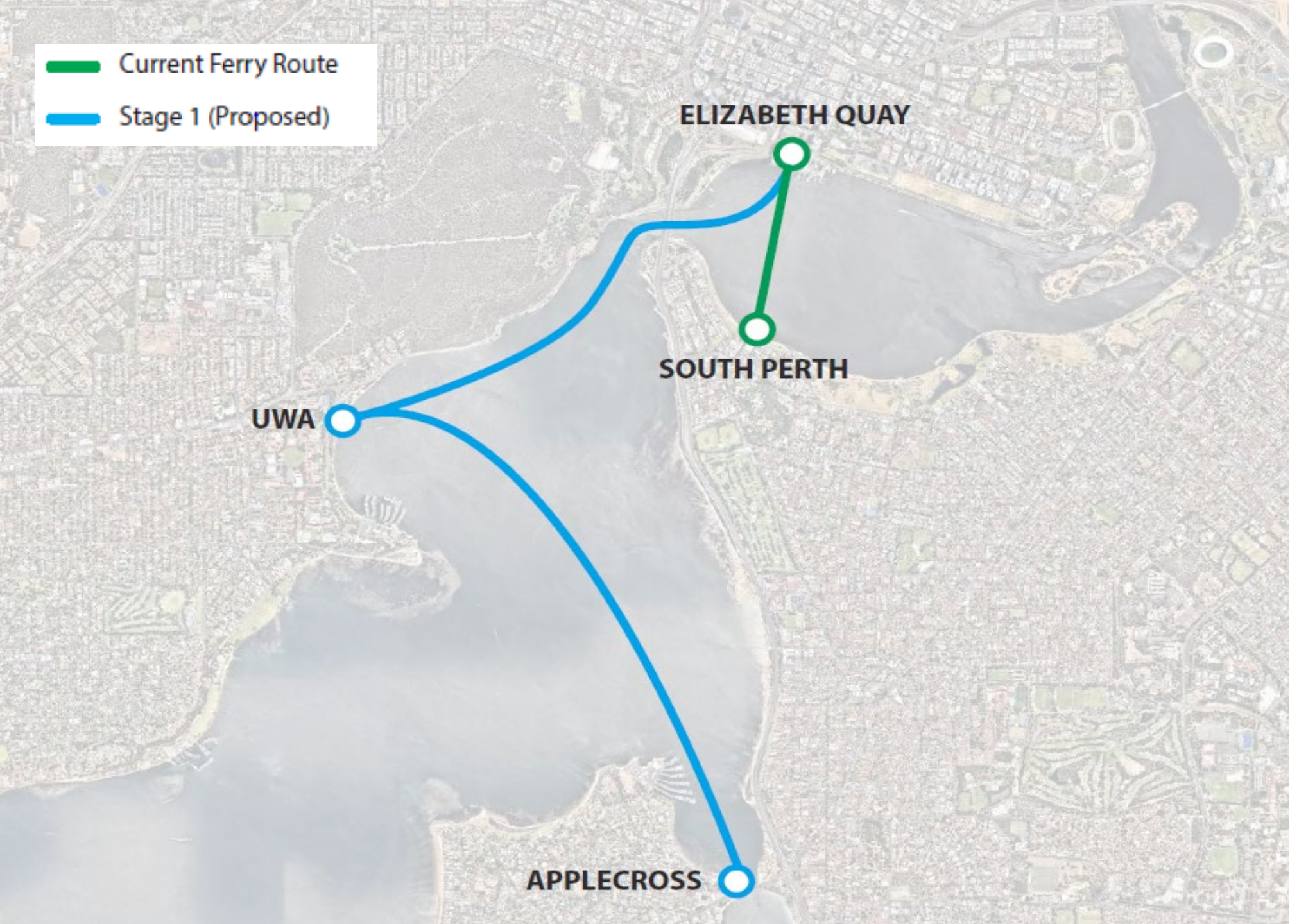


# Project & RFT Overview

- The Transport Portfolio is delivering the Transperth ferry expansion project.
- The PTA is seeking a suitably qualified contractor to design and construct five (5) electric passenger vessels to operate the service in the Swan River between Elizabeth Quay and Applecross via Matilda Bay/Crawley (final terminal locations are yet to be fully determined).
- Option for a further five vessels at PTA discretion.
- The proposed timetable has been included in Book 4, Technical Specification, including the distances and proposed speeds across each section of the Swan River.



- Current Ferry Route
- Stage 1 (Proposed)



# RFT Objective

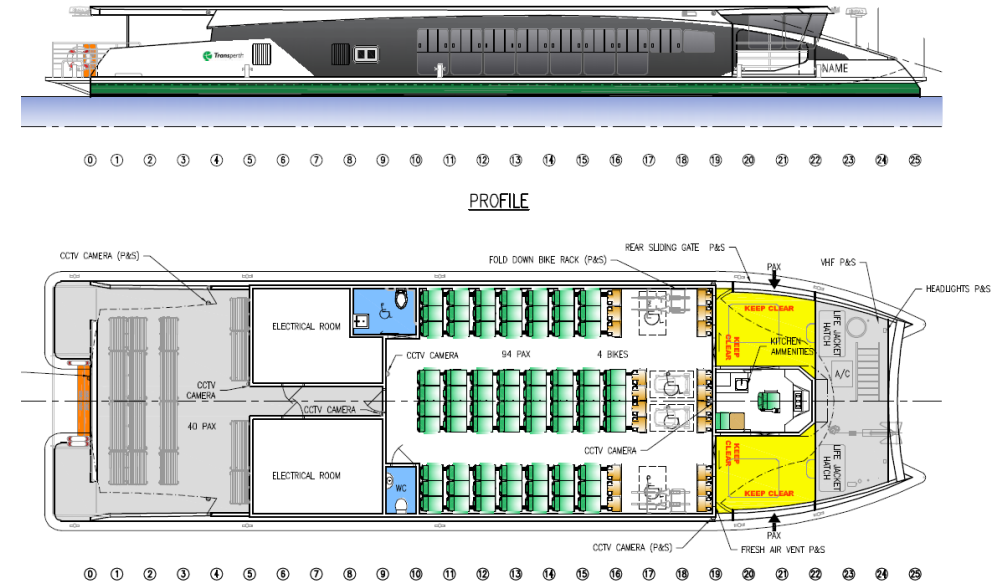
- As this is a design and construct project, all work and materials not specifically mentioned in Book 4, Technical Specification or shown on the reference design drawings but necessary for the proper and complete installation and operation, as implied in Book 4, are deemed within the scope of work.
- This will include the supply, delivery, installation, alterations, additions, testing, commissioning and warranty requirements.
- Reference design drawing and renders will be provided after today's briefing.
- It is a requirement of the tender and any subsequent contract that the vessels will substantially be in compliance with the reference design and PTA Technical Specification.



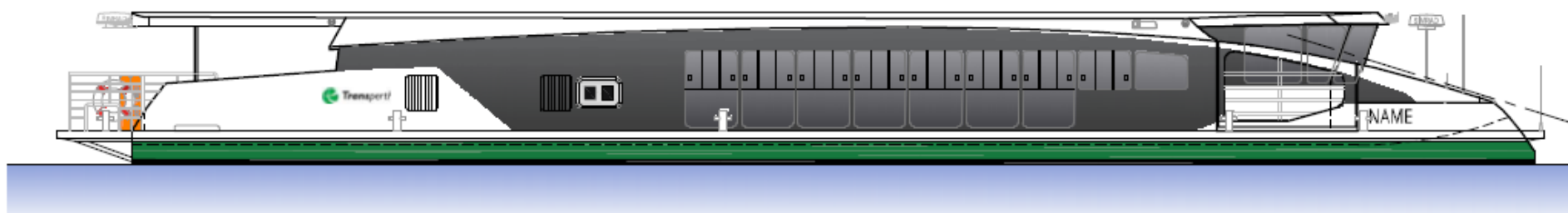
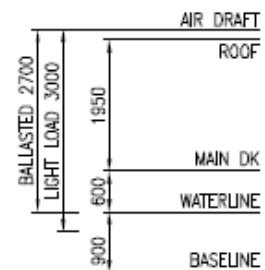


# Ferry Design

- Electricity-powered
- $\geq 100$  passengers
- $< 25\text{m}$  length
- Beam  $\leq 7.2\text{m}$
- Crew of two
- Max. cruising speed of 25 knots in open waters
- On-board toilet, wheelchair spaces, bike rack, CCTV

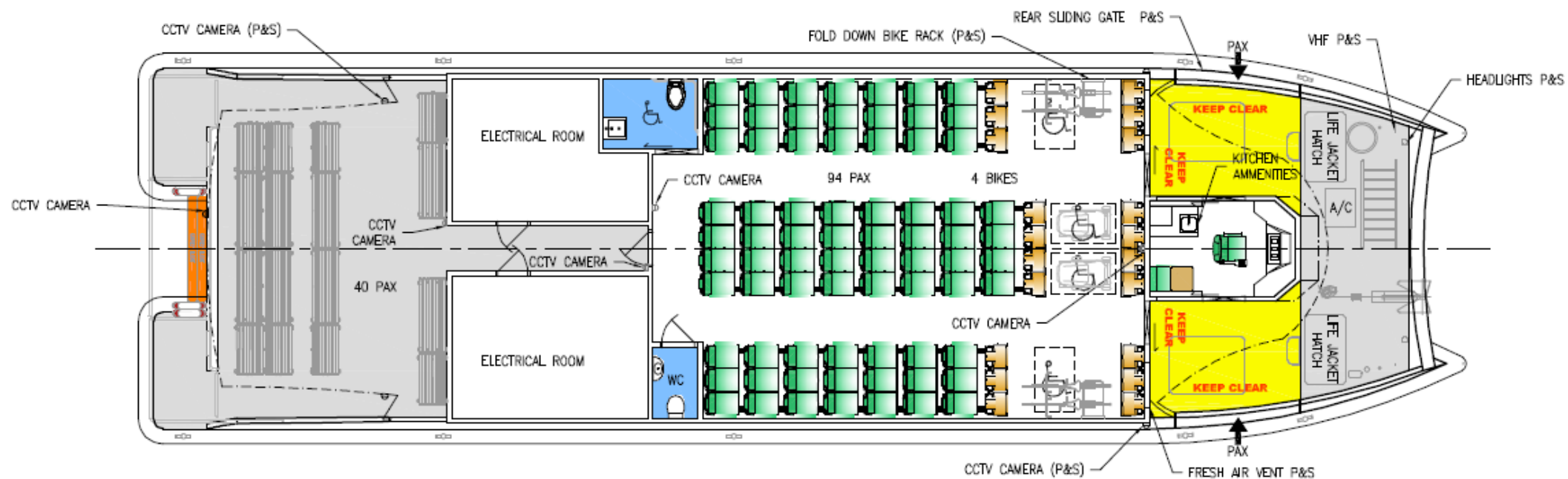






① ② ③ ④ ⑤ ⑥ ⑦ ⑧ ⑨ ⑩ ⑪ ⑫ ⑬ ⑭ ⑮ ⑯ ⑰ ⑱ ⑲ ⑳ ㉑ ㉒ ㉓ ㉔ ㉕

## PROFILE



① ② ③ ④ ⑤ ⑥ ⑦ ⑧ ⑨ ⑩ ⑪ ⑫ ⑬ ⑭ ⑮ ⑯ ⑰ ⑱ ⑲ ⑳ ㉑ ㉒ ㉓ ㉔ ㉕

## MAIN DECK



## SPECIFICATIONS

OVERALL LENGTH: (excl APPENDAGES)	24.95m
OVERALL LENGTH: (incl APPENDAGES)	26.47m
WATERLINE LENGTH:	24.95m
MEASURED LENGTH:	23.98m
BEAM: (excl SPONSONS)	7.2m
SEATS (INTERNAL):	94
SEATS (EXTERNAL):	40
PASSENGERS (TOTAL):	100
CREW:	2
CONSTRUCTION	
HULL:	ALUMINIUM
SUPERSTRUCTURE:	ALUMINIUM
FRESH WATER:	1 x 200l
SULLAGE:	1 x 780l













# Returnable RFT Documentation

- Executed Form of Tender (Book 1)
- Questionnaire (weighted) including WAIPS (Book 2a)
- Schedule of Pricing (Book 2b)
- Confirmation Receipt of Addenda (if applicable)
- All other relevant information





# Submitting Tenders

- A compliant tender must be submitted, alternative tenders may be submitted subject to a compliant bid being submitted
- Lodgement of Tenders will only be accepted via the TendersWA web portal: <https://www.tenders.wa.gov.au/>
- Website links will not be included in the evaluation as the content can change after the Tender closes
- Late or invalid Tenders will not be accepted
- All queries on the Tender document must be directed to Lisa Tierney - [lisa.tierney@pta.wa.gov.au](mailto:lisa.tierney@pta.wa.gov.au)



# RFT Evaluations

- Undertaken on a “value for money” basis
- The primary RFT evaluation criteria are as per Book 2a:
  - Demonstrated Company Experience to provide Vessels to specification as outlined in Book 4 (30% weighting)
  - Demonstrated Physical Resource Capacity (10% weighting)
  - Proposed Method of Construction (10% weighting)
  - Timelines of Delivery (15% weighting)
  - Demonstrated Experience – Key Personnel and Subcontractors (15% weighting)
  - Safety (5% weighting)
  - Quality (5% weighting)
  - Western Australian Participation Requirements and Local Manufacturing (10% weighting)



# Key Dates

Contract Timeframe	Date
RFT Briefing	Monday, 14 April 2025
Tender Closing	Wednesday, 21 May 2025 at 11:00
Request evaluation and recommendation	Friday, 13 June 2025
Evaluation Report approved	Tuesday, 1 July 2025
Contract negotiations	Wednesday, 2 July 2025
Contract commencement date	Wednesday, 1 October 2025





# Probity Advisor

- The PTA has appointed Bruce Donald of 2020 Global as the Probity Advisor for the procurement process.
- The Probity Advisor's role includes ensuring that the procedures adopted throughout the process are fair and equitable and adhered to.
- The Probity Advisor's contact details are as follows:

Probity Advisor: Bruce Donald

Organisation: 2020 Global

# PTA Procurement Advisor

- All enquiries must be directed to:

Lisa Tierney

Public Transport Authority

Public Transport Centre

116 West Parade

Perth WA 6000

Telephone No: +61 (08) 9326 2969

Email: [Lisa.Tierney@pta.wa.gov.au](mailto:Lisa.Tierney@pta.wa.gov.au)

# Summary

- Read all the documentation and send clarifications through as necessary
- Answer all the Tender Questionnaire criteria fully as the evaluation will be based on your responses
- The Tender closes at **11:00am, WA time on Wednesday 21 May 2025**
- Questions emailed to Lisa Tierney [lisa.Tierney@pta.wa.gov.au](mailto:lisa.Tierney@pta.wa.gov.au)



# Thank you!

**Learn more at**

[transport.wa.gov.au/aboutus/transport-portfolio.asp](https://transport.wa.gov.au/aboutus/transport-portfolio.asp)

[pta.wa.gov.au/about-us/our-role/transport-portfolio](https://pta.wa.gov.au/about-us/our-role/transport-portfolio)

[mainroads.wa.gov.au/about-main-roads/our-organisation/](https://mainroads.wa.gov.au/about-main-roads/our-organisation/)